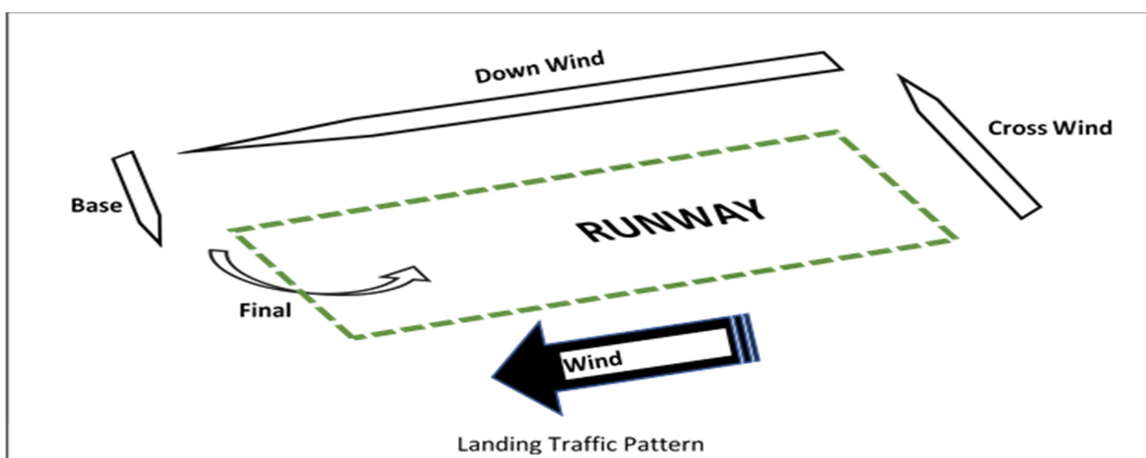


Field Rules

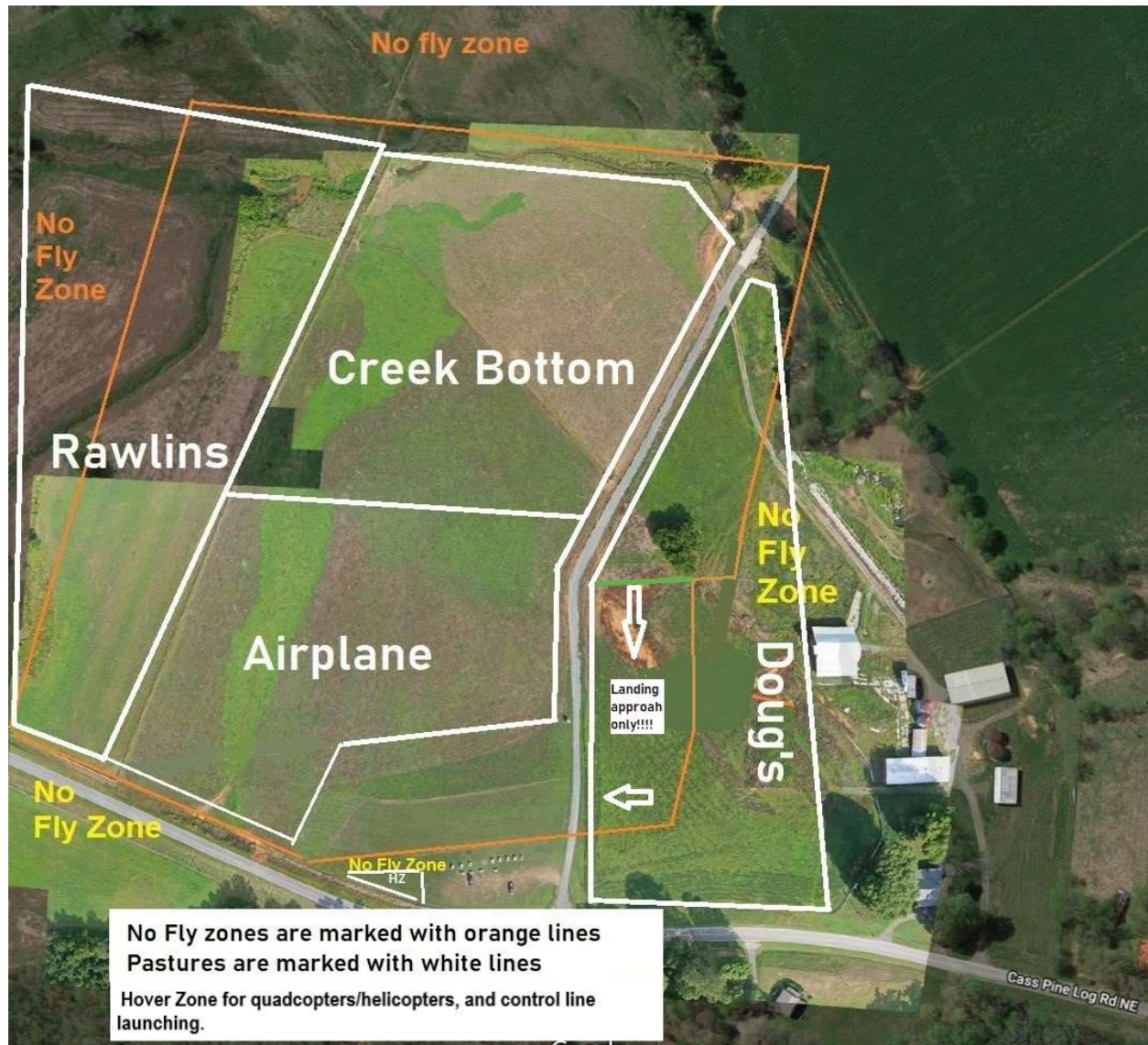
- FLYING HOURS - BCMA hours of operation begin at 8AM. At the request of the property owners, BCMA members and guests MUST VACATE THE PROPERTY AND LOCK THE GATE BY SUNSET. SUNSET is determined as “Actual Time Set” in Rydal, GA by www.wunderground.com. Night flying of electric aircraft is allowed with prior notification of at least one of the officers and the property owners (text message preferred).
- Only BCMA members and invited guests may fly at the BCMA airfield. For safety reasons, all pilots are encouraged to fly with others present at the airfield. Pilots under the age of 18 MUST have an adult member present to fly.
- It is expected that all members and invited guests follow the AMA Model Aircraft Safety Code as well as these published BCMA Field and Safety Rules.
- No member or guest may fly unless they have in their possession a current AMA card and FAA Registration Number. FAA number must be displayed on the exterior of each aircraft.
- Pilots must display your AMA card on the frequency board if you fly on 72MHz or 50Mhz FM bands and display the associated frequency pin.
- Flying alone is at your discretion. An observer is strongly encouraged for safety reasons. In case of emergency, call 911 with the address of 701 Cass Pine Log Road, Rydal, GA.
- All aircraft must meet BCMA **noise limits of 98dB at 10'** using the BCMA sound meter with **“A” response weighting**. Measurements must be taken at 10 feet from the front and sides of the aircraft, 8 inches above the ground running at full power.
- If a member is coming out to the field at night to retrieve something, call Jim to let him know that you will be at the field. He doesn't want to have to worry about what's going on, after hours.
- **No flying while the field is being mowed.**
- Members and Parents are responsible for the safety and conduct of children and guests.
- All pets must remain safely inside the owner's automobile or be restrained on a leash. Owners of pets are responsible for any damages to the property caused by pets.
- Each person is responsible for his/her own trash. No trash bins will be kept at the field.
- Alcoholic beverages are prohibited. No person under the influence of alcohol or drugs will be permitted to fly.

Safety Rules

- Prior to each flying session, perform a "pre-flight" check, including the propeller and spinner for tightness, the motor mount is secure, hinges, clevis, pushrods, wing fasteners are secure, and all control surfaces are operating correctly.
- Prior to starting your engine or connecting the battery, secure the aircraft from the accidental forward movement. Any adequate restraint will work. Do not try to hold the aircraft and start the engine by yourself. Ask for assistance.
- **Powered taxiing is not allowed in the pit area.** The Pit Area is defined as all flight line areas behind the black chain link fence at the runway edge to include flight tables, picnic benches, driveway, porta potty and parking areas. **If your engine is running in the pit area, it must be restrained, or you must always have a hand on your aircraft.** Walk running aircraft to the runway entrance. Electric motors should have their throttle disabled (on a kill switch) until you reach the runway.
- Pilots must announce your intentions so that all pilots flying can hear you whenever you take-off, land, or enter the runway. If multiple planes are flying, wait for a response from the other pilots as they may need to land. Examples: "taking off left to right," "landing left to right," "dead-stick," "on the field," "lost complete control," etc.
- Pilots must follow the flight pattern established by the prevailing winds at PTF and consensus of the pilots present. **Upwind** passes should be flown from the middle of the runway to the runway outer edge. **Downwind** passes should be flown no closer than the runway outer edge and beyond over the Creek Pasture. If the pilot is safe and will not interfere with other pilots in the air, they can perform upwind high-speed passes no closer than the runway outer edge. Do not conduct high-speed maneuvers perpendicular to the runway or any direction that could possibly take the aircraft beyond the acceptable flying boundaries.



Possum Trot Farms Field Diagram



- Do not fly beyond the acceptable **FLIGHT ZONE** boundaries in the aerial view of PTF at **ANY TIME**. These boundaries are marked in **ORANGE** on the aerial view. This includes over Cass Pine Log Road and the pits for any reason.
- **NO FLIGHT IS ALLOWED TO THE RIGHT BEYOND THE DRIVEWAY FENCE UNLESS ON TAKE OFF / FINAL APPROACH!** NO FLY ZONES ARE MARKED IN **YELLOW** on the aerial view.
- Pilots must stand behind the safety fence while flying. Everyone must remain clear of an active runway when planes are in the air unless there is a specific reason to enter the active runway.
- For FPV operations, follow the FAA rules and always have the aircraft insight by the pilot or a spotter. If the pilot is not looking at the aircraft (wearing goggles or watching an FPV display), a **spotter is required**. A hover only area has been established for use by quadcopters and helicopter that are not able to fly the normal flight pattern for the main runway. Control Line airplanes will use the hover area as a launching area and ask the pilots on the flight line to allow them to take a turn flying because they will be over the main flight line.

DOWNED AIRCRAFT PROCEDURES

- In the case of a downed aircraft, please follow this guide for removing downed aircraft and **ALL** crash debris.
 - Pasture identifications are viewed when facing the runway.
 - **Rawlins' Pasture** is on the **left** beyond the property fence.
 - **Airplane Pasture and Creek Bottom Pasture** is in **front** of the runway.
 - **Doug's Pasture** is to the **right** of the driveway.
 - If the aircraft is within the **Rawlins Pasture**, and there are **NO** cattle in the pastures.
 - Only one Adult can proceed to recover the wreckage. Entrance to the **Rawlins Pasture** is by the metal gate by the Cass Pine Log Road.
 - If the aircraft is within the **Doug's Pasture** (there are no cattle in this pasture)
 - An **adult** can retrieve a downed aircraft from Doug's Pasture. One entrance is the gate is down near the creek, and the other is the opening by the front gate as you drive into the field.
 - If the aircraft is within the **Airplane Pasture** and there are **NO** cattle in the pasture,
 - **An adult can retrieve a downed aircraft from the Airplane Pasture.**
 - Be cautious of the **electric fence** as it is **HOT!**
 - If there **ARE** cattle in the Airplane or Creek Bottom Pasture, please contact Jim (770-655-9171) or Cathy Raines (770-655-0654) for assistance. If neither are available, **one Adult person is to walk slowly with no sudden movements that may startle the cattle to retrieve the downed aircraft and remove absolutely all debris. Please contact one of the BCMA officers to make them aware of the situation if you MUST go in a field when Cattle are present**
 - In all cases, please make sure there is absolutely no debris left at the crash site. Carry a small trash bag with you to collect the debris.
 - No one is allowed to WALK down the driveway towards the Airplane or Creek Bottom Fields as this may spook the cattle. Driving in a car is allowed on driveway only.
 - At no time is anyone allowed to climb on boarder fences.
 - Under **NO** circumstances are members allowed to **remove or take down the electric fence or to drive a motor vehicle onto any pastures**. If a circumstance requires assistance for a member to retrieve a downed aircraft, contact Jim (770-655-9171) or Cathy Raines (770-655-0654) for assistance or a BCMA Club Officer.

